

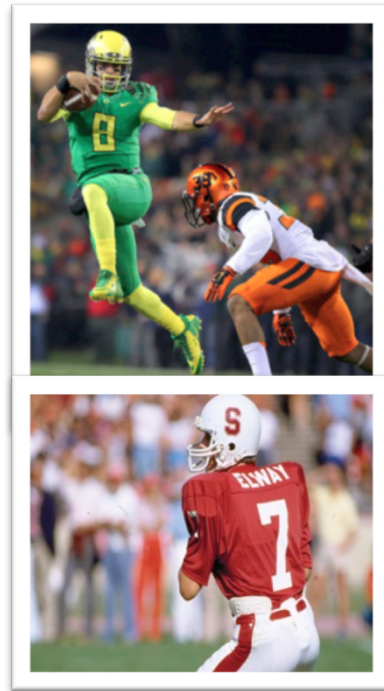


Empowering community, career, and college readiness

HICAN Conference
September 18, 2015

Dr. Matt Coleman, Educational Policy Improvement Center

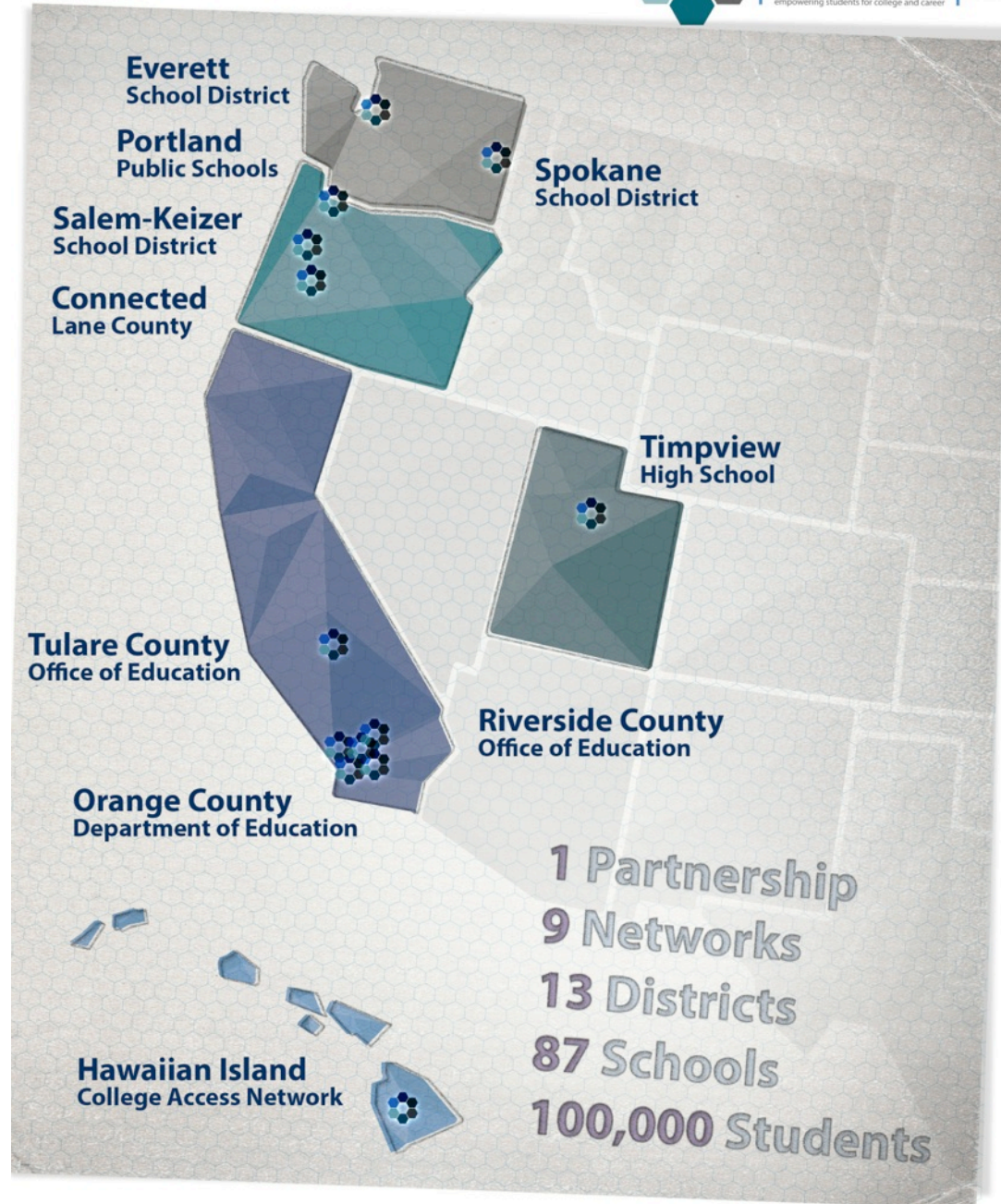
Who am I?



Who is EPIC?



think deeply about what they are doing
know contextually why they learn
act purposefully to achieve their goals
go successfully through life's transitions



Focus for today

The Power of One

Recognize

the need to center on community/culture
your personal and professional potential to
influence

Celebrate

the collective success of your work to date

Encourage

acknowledge the need and the work ahead
focus on a broader application of CCCR
embrace the use of Na Hopena A'o

Commit

to moving toward the power of WE
to exerting leadership (influence) for change
to achieving readiness for all

Recognize the need and your personal and professional potential to influence



**Learning
to Leave**

**Ho'okahi ka
'ilau like ana**



Celebrate



Excel



Spark



Transform

Celebrate



Ke Ana La'Ahana



Celebrate

Ke Kula'ō'Ehunuikaimalino



Celebrate



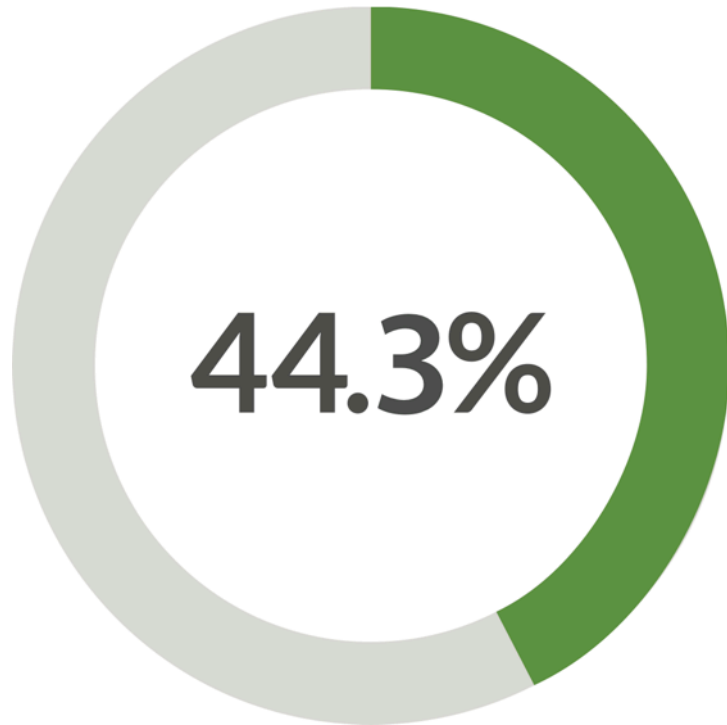
More grads are bound for college

The college-going rate for public high school graduates **increased to 56%** in 2014, up from 54% each of the previous two years and from 50% five years ago.

Farrington High in Kalihi, for example, boosted its college-going rate to 51% from 36% in 2010.

At **Keaau High**, the number of graduates equipped to take college-level math and English nearly **doubled** over the last three years.

Celebrate

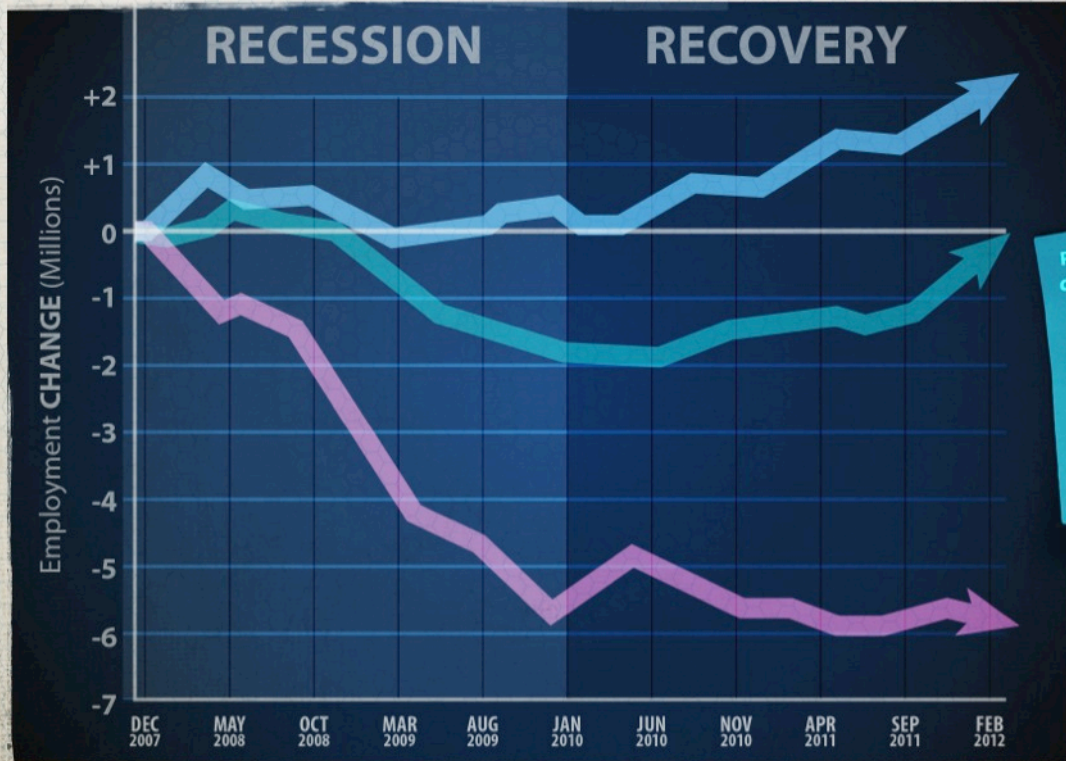


56% > 50%

71%

Encourage you to...
acknowledge the need and the work ahead

“Nearly 4 out of 5 jobs destroyed by the recession were held by workers with a high school diploma or less.”



People with a bachelor's degree or better...
GAINED 187,000 jobs in recession and GAINED 2 million jobs in recovery

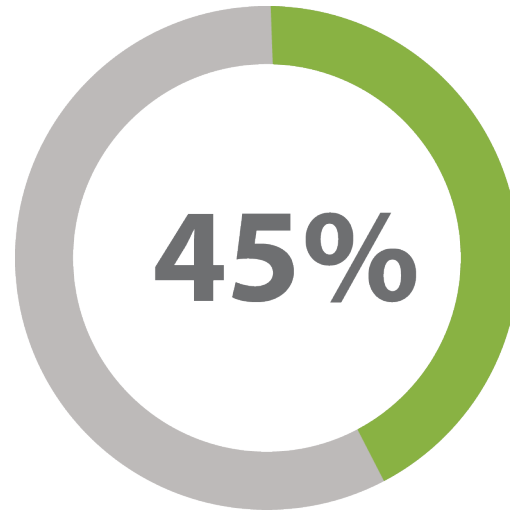
People with an associate's degree or some college...
LOST 1.75 million jobs in recession but GAINED 1.6 million jobs in recovery

People with a high school degree or less...
LOST 5.7 million jobs in recession and LOST 23,000 jobs in recovery

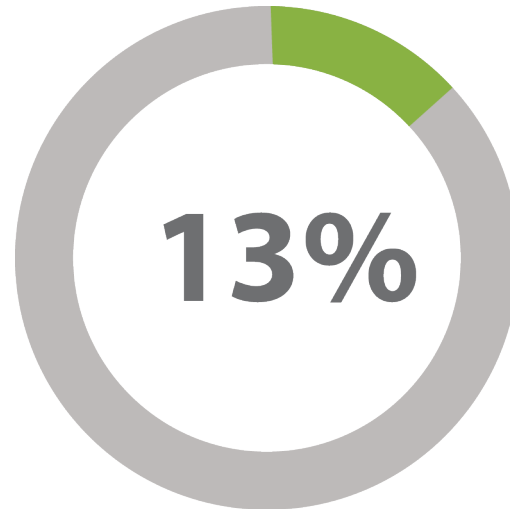


Source: Carnevale, Anthony, Tamara Jayasundera, Ben Cheah (August 2012) "The College Advantage" (Figure 1, pg. 5)
Authors' estimate of the Current Population Survey data (2007-2012). Employment includes all workers aged 18 and older.

Encourage you to acknowledge the need and
the work ahead



**said helpful but
not a necessity**



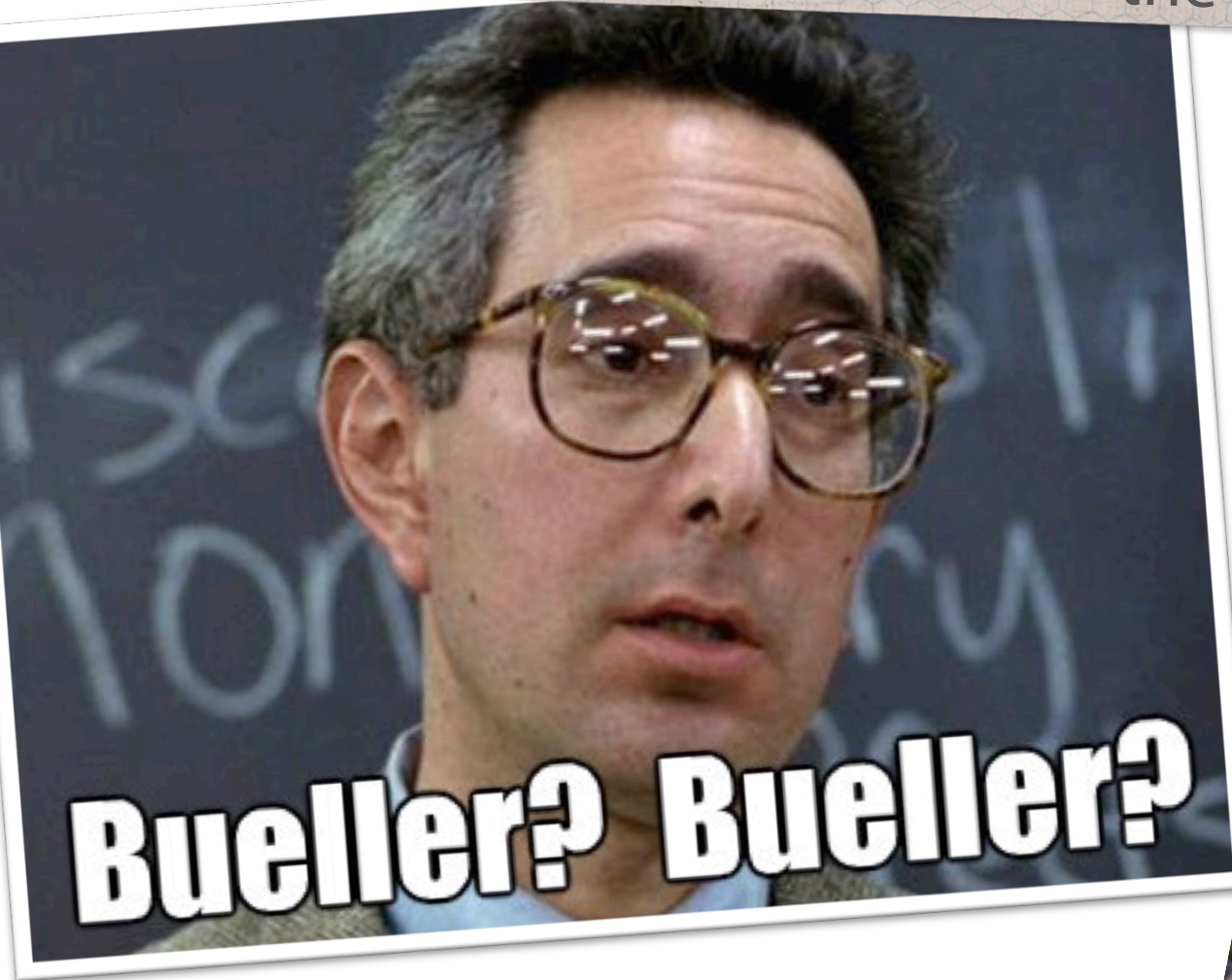
**said not a
necessity**

Encourage you to acknowledge the need and
the work ahead



Google

Encourage you to acknowledge the need and the work ahead



59 year difference

I was 16 in 1986.

**My 16 year old son
will be 45
in 2045.**





**Learning Skills and
Cognitive Strategies**

**Essential Content
Knowledge**



Encourage you to focus and
use a broader definition
of CCCR



Transitional Skills

Wayfinding





Learning Skills and Cognitive Strategies

Goal Setting

Persistence

Organization

Key Cognitive Skills

construct meaning

Essential Content Knowledge



CCSS

Hawaiian And World Languages

Sciences

Social Studies

Knowledge of Lifes multiple pathways

Career Knowledge

Navigate the Post secondary maze



Transitional Skills

Kuleana

Cultural Identity

Interface with Global communities

Connected To Community

Leadership

Wayfinding





Learning and Cognitive Skills

Essential Content Knowledge



PROPOSED GENERAL LEARNING OUTCOMES

RESPONSIBILITY
EXCELLENCE
ALOHA

HAWAI'I

RESPONSIBILITY

TOTAL WELL BEING
EXCELLENCE
HAWAI'I
ALOHA
BELONGING

Nā HOPENA A'O

Hawaiian and World Languages

Sciences

Social Studies

Arts

Cultural Identity

Interface with communities

Connected To Community

Leadership



Transitional Skills

Wayfinding





**Learning Skills and
Cognitive Strategies**

**Essential Content
Knowledge**



Encourage you to use
Na Hopena A'o as a lens to focus
your individual efforts and as a
bridge to realize
the power of WE



Transitional Skills

Wayfinding





Learning
Cognition

Essential Content
Knowledge



Transitional Skills

Wayfinding



Commit to exerting influence (leadership) for
change

School Report Cards

An example of a
systemic issue



Learning Skills and Cognitive Strategies

College Going Rates

Essential Content Knowledge



Reading Proficiency

Math Proficiency

Science Proficiency

Graduation Rates

Eighth Grade ACT/ EXPLORE

Eleventh Grade ACT

GAP Reduction

What is Wrong with this Picture

College Going Rates



Transitional Skills

Wayfinding





Learning and Cognitive Skills

Essential Content Knowledge



PROPOSED GENERAL LEARNING OUTCOMES

RESPONSIBILITY
EXCELLENCE
ALOHA

HAWAI'I

RESPONSIBILITY

TOTAL WELL BEING
EXCELLENCE
HAWAI'I
ALOHA
BELONGING

Nā HOPENA A'O

Hawaiian and World Languages

Sciences

Social Studies

Arts

Cultural Identity

Interface with communities

Connected To Community

Leadership



Transitional Skills

Wayfinding





Learning Skills and
Cognitive Strategies

Essential Content
Knowledge



Encourage you to consider
rethinking the order of
your three C's

Community, Career, and
College Readiness



Transitional Skills

Wayfinding



Not so Random Thoughts

Take time to celebrate

Lead from where you are at

Remember, you are preparing
100% for community and
career readiness

The potential to realize all
depends on ability to focus
and nurture the cultural
identity of the child

We and Me

The Power of One is real



Mahalo